



2016 X-Yachts Xp 44

Boat Type: Racer

Address: Annapolis - Jabins, MD, US

Price: \$399,000



OVERVIEW

Motivated Seller!!!

Price Reduced \$50,000

Priced well below market value

Owner has over \$1 mill. invested

The **X-Yachts XP-44** was Sailing World's 2014 Boat of the Year and has quickly become a proven race winner. "**Sitella**" has been upgraded and optimized to the highest standards. The cruising interior has been removed and packed up. Everything is packaged and labeled for easy re-installation. This makes her the perfect dual purpose weapon.

Too many upgrades to list here. Please see the **FULL SPECS** page on this listing.

SPECIFICATIONS

Basic Information

Manufacturer:	X-Yachts	Vessel Name:	Sitella
Model:	Xp 44	Boat Type:	Racer
Year:	2016	Hull Material:	Fiberglass
Category:	Sail	Hull Type:	
Condition:	Used	Hull Color:	
Location:	Annapolis - Jamins, MD, US	Designer:	
Available for sale in U.S. waters:	Yes	Flag of Registry:	

Dimensions & Weight

Length:	44 ft - 13.41 meter	LOA:	46 ft 9 in - 14.25 meter
Draft - max:	9 ft 6 in - 2.9 meter	Draft - min:	-
Beam:	13 ft 4 in - 4.06 meter	Bridge Clearance:	68 ft 6 in - 20.88 meter
Dry Weight:	19070 ft - 5812.54 meter		

Engine

Make:	Yanmar	Engine Type:	Inboard
Model:	4JH57	Drive Type:	
Engine(s):	1	Fuel Type:	Diesel
Hours:	-	Horsepower:	57 (Individual), 57 (combined)
Cruise Speed:	-	Max Speed:	-
Range:	-	Joystick Control:	No

Tank Capacities

Fuel Tank:	53 gallons - 1 tank(s)	Holding Tank:	-
Fresh Water Tank:	92 gallons - 1 tank(s)		

Accommodations

Total Cabins:	3	Crew Cabins:	1
Total Berths:	-	Crew Berths:	1
Total Sleeps:	1	Crew Sleeps:	1
Total Heads:	2	Crew Heads:	1
Captains Cabin:	-		

DESCRIPTIONS

2016 Upgrades

- Gori 3-blade folding prop
- Bottom professionally faired, Interprotect Barrier Coated and Burnished Trinidad SR bottom paint

- Bowthruster tube glassed over. Could be re-installed
- Transom swim ladder and platform available
- Custom hydraulic backstay with controls at both helms
- Upgraded Synthetic Backstay w/ Cover
- Custom Carbon Fiber cockpit floor insert. Original pop-up teak table available.
- Custom Carbon Fiber Bowsprit (18" longer than standard, Original sprit available)
- All running rigging upgraded (Dynema)
- Custom twin sheave halyard exit at top of mast
- Cabin-top winches upgraded to 2-Drum
- Custom Carbon Fiber Traveler Cover in cockpit floor
- Code 0 Sheave Box w/ attachment point
- Custom Carbon Fiber Radar Pole w/ Gimbaling top

2018 Upgrades

- Deeper C&C Machined T-keel installed (9' 6" draft)
- Custom Fiberglass Rudder w/ Carbon Fiber Stock
- Upgraded Joffa Rudder Bearings
- Refit designed by Greg Stewart w/ Nelson Marek

Sail Inventory

Mainsails

- 1-2016 Ullman (Delivery Mainsail)
- 1-2017 Quantum Mainsail
- 1-2018 Quantum Mainsail

Upwind

- 1-2016 Ullman J1
- 1-2017 Quantum J1
- 1-2018 Quantum J1
- 1-2016 Ullman J2
- 2-2017 Quantum J2s
- 1-2018 Quantum J2
- 1-2016 Ullman J3
- 1-2017 Quantum J3
- 1-2017 Quantum J4

Offwind

- 1-2017 Quantum Jib Top
- 1-2016 Ullman Code 0
- 1-2017 Quantum Code 0
- 1-2017 Quantum A1
- 1-2018 Quantum A1
- 2-2017 Quantum A2s
- 1-2018 Quantum A2
- 1-2016 Ullman A3
- 1-2017 Quantum A4
- Staysail

Electronics

Port Helm

- B&G Zeus-2 12 inch MFD

Starboard Helm

- B&G Zeus-9 9 inch MFD
- B&G H5000 Autopilot Control
- B&G V90 Remote VHF

Companionway Instruments

- 2 x B&G H5000 Graphic Displays
- Wet Compass

Mast Instruments

- 5 x 20/20HV Displays
- Custom Carbon Fiber 5 Display Mast Bracket

Nav. Station

- B&G V90 Remote VHF
- Laptop Integration

Radar

- B&G RI 10 Broadband Radar
- Removable Carbon Fiber Radar Pole w/ Gimballed Top

System Instruments

- B&G H5000 CPU w/ Hercules
- B&G V90 VHF Black Box
- B&G NAIS 400 Class B AIS Transceiver w. Custom "Silent Switch"
- B&G NSPL 400 AIS/VHF Antenna Splitter
- B&G NEP-2 Expansion Port
- B&G Precision 9 Compass

Manufacturer Provided Description

The Xp 44 was the first of the Xperformance line to be launched, and was named Sailing World's "Yacht of the Year" in 2014. A highly optimised hull shape offers exemplary performance in a range of wind conditions, on all angles of sail, under both ORC and IRC handicap systems. Key elements of the hull design include reduced upright beam and wetted surface area, while the transom shape ensures that as windspeed builds and the boat powers up, the overall waterline length increases for additional speed.

X-Yachts are designed by sailors, for sailors. Every Xperformance yacht is created to perform superbly in all conditions and in all sail configurations. However, many of the very same factors which make the Xp models race winners, also ensure that they are enjoyable fast cruisers.

Hull

- Built in sandwich construction with structural foam core
- Bi-directional and uni directional E-glass strategically positioned for strength and weight optimization
- Solid laminate in high stress areas in way of keel top, sail drive and rudder tube
- Hull epoxy infused in female moulds for optimum consolidation and high quality surface finish

- Structural bulkheads in marine plywood varying in thickness from 16-20 mm bonded to hull
- Structural liner moulding laminated into hull. Carbon fiber reinforcements to absorb all loads from keel and mast.
- Single point hoist for easy and safe lifting and launching of the yacht
- Bathing ladder in stainless steel mounted on transom
- Hull recessed portlights - Rectangular (6 pcs)

Deck

- Built in sandwich construction with structural foam
- E-glass with bi and uni-directional cloth strategically positioned for strength
- Deck and locker lids moulded in female moulds for highest quality surface finish
- Teak, vacuum applied, 9 mm nominal thickness on cockpit sole and seats
- Variable height bulwark incorporated in deck/hull design providing safe toe rail forward and comfortable hiking aft
- Anchor locker - drained area with windlass and space for anchor chain. Dry compartment for general storage
- Gas locker compartment, for 2 x 3 kg gas bottle, located in port cockpit coaming, drained to the sea (1 x 3kg is delivered with the yacht)
- Liferaft can be stored in stb aft cockpit locker - max size 800 x 545 x 325.
- Second liferaft can be stored in port aft locker (max size 730 x 500 x 350).
- Gas spring fitted to forward and both aft cockpit lockers (4 pcs)
- Halyard locker recessed into cockpit floor
- Cockpit floor locker, hinged lid, for optional cockpit table

Accommodations

- Xp 44 - Three cabin layout with heads situated in owners cabin and STB aft
- The interior will consist a combination of composite and wooden units.
- Utilising First class craftsmanship and lamination techniques
- Pre-selected, top grade T-teak veneer throughout yacht, hand polished and varnished to satin finish
- T-teak veneered bulkheads
- White laminate bulkheads used inside bathrooms, on aft bulkhead and centre bulkhead in aft cabins
- GRP deck head liner with integrated light fittings. Pleated blinds hidden behind soft panneling on coachroof side
- GRP hull liner including heads floor and shower tray
- Floorboards of 16 mm marine plywood with imitated teak and Gaboon plywood inlay stripes and inspection hatches to access bilge.
- Companionway (Grp moulding) with steps of curved unvarnished teak
- Handrails by entrance and alongside coach roof portlights in main cabin
- Oceanair blinds incl flyscreen fitted to skylights (6 pcs)

Owner's cabin

- Large double berth. Marine plywood mattress supports. Mattresses in 120 mm comfort foam. Max size 205 x 190 cm
- Seat with backrest cushion to starboard
- Large double composite wardrobe (85 cm wide) with shelves and hangers on starboard
- Composite night table with lower storage on port side
- Freeboard shelves above berth
- Storage space under owners berth for bedding
- Freeboard lined with vinyl covered 7 mm panels

Main cabin

- To port: L-shaped 4 seater sofa (210 cm x 118 cm x 68 cm) surrounding dining table
- Two-seater settee bench in centre
- All sofa fronts in white GRP
- To starboard - Optional 3 cabin version with fixed aft facing nav station: Sofa length of 185 cm, and drawers underneath chart table.

- All sofa front covered with T-teak veneer.
- Deep shelves behind the back rest including a set stainless steel book holders
- Deep overhead lockers with bottom hinged openings running full length of saloon
- Electrical switch board located above chart table on upper lockers
- Freeboard lined with vinyl covered 7 mm panels

Aft Cabin

- Large double berth (205 cm x 145 cm, max width) Marine plywood mattress support with ventilation holes.
- Mattresses 120 mm comfort foam
- Large double composite wardrobe (85 cm wide) with shelves and hangers
- Freeboard lined with vinyl

Head & Shower Compartment

- Upper cabinet fronts in heads with T-teak veneer surface
- Bulkheads covered with white laminate
- Tabletop and sink in a white composite moulding
- Mixer taps, single lever luxury for sink and shower
- Electrical pump for shower floor sump, manually operated switch
- Towel rail and grab handle running around table top in stainless steel
- Towel hooks and loo roll holders
- Mirrors above sinks

Galley

- Galley, High gloss white Composite moulding L-shaped (157 cm x 180 cm)
- Drawer unit with 4 drawers - top 3 drawers for cutlery and bottom drawer dedicated for tools
- Sinks, rectangular recessed stainless steel with single lever mixing tap (2 pcs) including 2 cutting boards
- Cool box, GRP top opened 130 l with 100 mm insulation, built in Isotherm SP, accumulator plate sea water cooled Danfoss compressor
- Gimballed Gas cooker - 3 burner Eno cooker with oven
- White surface lower lockers provide storage space for crockery and food
- T-teak veneer surface upper lockers for plates and food
- 10mm hardened Glass splash board
- Waste bin mounted under sinks

Engine

- Main engine upgraded 57 HP Yanmar, water cooled diesel engine with S-Drive
- Special engine compartment with sound insulation ensures low noise level in yacht
- Engine easily accessible for service at the forward end, through companionway steps; and from the aft end via removable GRP boxes
- Folding propeller, 3-bladed Gori bronze for S-drive
- Engine control panel and throttle/gear lever placed in starboard cockpit coaming.
- Engine control panel incorporates rpm meter, hour counter, acoustic alarm for oil pressure and cooling water temperature
- Tank in aluminium for fuel below sofa in saloon. VDO analogue level gauge, filter with water separator and shut-off valve and deck fill (200 litre)

Electrical

- Mastervolt Inverter/Charger
- 12 V DC system throughout yacht

- X-Yachts main switch board with 27 automatic fuses and 3 analogue VDO meters for fuel, water and battery voltage
- 12 V DC system for main engine installation
- All cabling terminates in a dry GRP box fitted behind main electrical panel for added safety
- Shore power installation with shore power inlet mounted in cockpit protected by 10A main fuse. 110V AC distribution box located in starboard aft cabin with integrated ground fault circuit breaker/10A fuse, 110V
- AC socket and switches for hot water immersion heater and battery charger
230 V and 12 V socket mounted at main switch board
- 12V halogen lights fitted for general purpose below deck throughout cabins
- Chart table light fitted
- General lights and dome spotlights integrated in inner liner
- Reading lights throughout aft cabin, main cabin and owners cabin (8 pcs)

Mast and Rigging

- Fractional double spreader keel stepped mast, tapered carbon fiber, specially designed for Xp 44
- Steaming light, Windex with light, tube for additional electrical equipment and 2 mast steps fitted
- Carbon Fiber boom with single line reefing and internal boom outhaul, telescopic vang and outer purchase block system

Standing Rigging

- Central backstay fitted with dual custom backstay adjusters
- Chain plates in stainless steel fitted to bullwalk/on top of hull (2 pcs)
- Discontinuous rod rigging with rod turnbuckles
- Rod forestay
- Chain plates in stainless steel for forestay and centre backstay (2 pcs)

Running Rigging

- Vectran Upgraded halyards led back to cockpit for easy handling:
- Main halyard 12 mm
- Mast head spinnaker halyard 12 mm
- Genoa halyard 12 mm
- Spectra sheets and polyester control and reefing lines:
- Furling control line 8 mm
- Cunningham 6mm
- Outhaul 8 mm
- Vang control line 8 mm
- Reef 1 10 mm
- Reef 2 10 mm
- Mainsheet 10 mm
- Genoa Sheet 10 mm

Accessories

- Climma 12,000 BTU Air Conditioning
- 12 volt fans
- 1 x Flag pole, teak with bronze bushing
- 1 x 25 m shore power cable
- 1 x 3 kg gas bottle
- 4 x Fire extinguishers, dry powder of 2 kg each, fitted throughout the yacht and one fire blanket
- 4 x Fenders, white air-filled with lanyards and X-Yachts logo
- 2 x Mooring ropes, polyester 20 m x 14 mm

Also Available - Not Installed

- Teak Pop-up Cockpit Table
- Windlass
- Bow Thruster
- Generator
- Interior Woodwork and Hardware
- Interior Cushions and Mattresses
- Aft Head
- Stove

Does Not Convey

- Laptop (toughbook)
- I-pad (tablet)

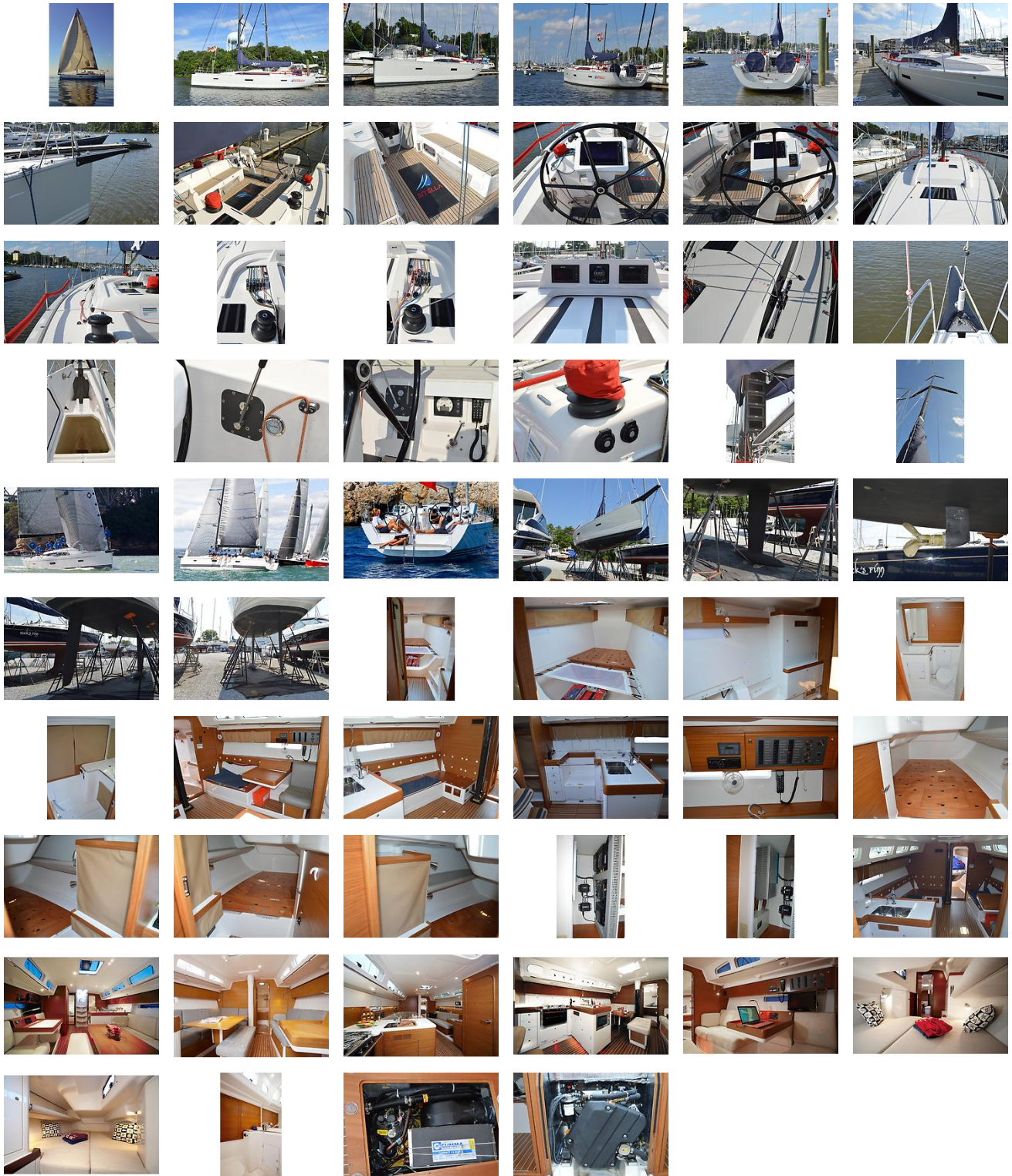
NPYS Disclaimer

The Company offers the details of this vessel in good faith but cannot guarantee or warrant the accuracy of this information nor warrant the condition of the vessel. A buyer should instruct his agents, or his surveyors, to investigate such details as the buyer desires validated. This vessel is offered subject to prior sale, price change, or withdrawal without notice.

External Links

- [Manufacturer Website](#)Manufacturer Website

GALLERY



LOCATION MAP



North Point
yacht sales

ANNAPOLIS • PORTSMOUTH • CHARLESTON

BOB OBERG
North Point Yacht Sales
7330 Edgewood Road
Annapolis, MD, US
Office: 410-280-2038
Mobile: 410-320-3385
bob@northpointyachtsales.com

