



1999 Sabre 402

Boat Type: Cruiser

Address: Tracy's Landing, MD, US

Price: \$149,500



OVERVIEW

Major Price Reduction - Owner Says "Make Her Yours"

The Sabre 402 truly defined the performance oriented cruiser. She combines spirited, yet easy to manage sailing qualities and very comfortable interior.

For its size, the Sabre 402 has one of the best all around interior layouts of its generation. A fantastic combination of truly usable spaces. Beautiful Sabre construction with full varnished cherry joinery throughout and solid teak and holly cabin sole. Extensive opening ports and overhead hatches bring in lots of light and fresh air. It's really hard to imagine getting any more out of a 40's interior.

Sailin's Whalen is a nice example of the 402. Recent additions include genoa, bottom paint and batteries. The 2 cabin interior has AC/heat and is pre-wired and set up for a genset. She is all set to take you on your next adventure.

SPECIFICATIONS

Basic Information

Manufacturer:	Sabre	Vessel Name:	Sailin's Whalen
Model:	402	Boat Type:	Cruiser
Year:	1999	Hull Material:	Fiberglass
Category:	Sail	Hull Type:	
Condition:	Used	Hull Color:	
Location:	Tracy's Landing, MD, US	Designer:	
Available for sale in U.S. waters:	Yes	Flag of Registry:	

Dimensions & Weight

Length:	40 ft - 12.19 meter	LOA:	40 ft 2 in - 12.24 meter
Draft - max:	4 ft 11 in - 1.5 meter	Draft - min:	-
Beam:	13 ft 4 in - 4.06 meter	Bridge Clearance:	-
Dry Weight:	-		

Engine

Make:		Engine Type:	Inboard
Model:	55A Four-FWC	Drive Type:	
Engine(s):	1	Fuel Type:	Diesel
Hours:	1156	Horsepower:	50 (Individual), 50 (combined)
Cruise Speed:	-	Max Speed:	-
Range:	-	Joystick Control:	No

Tank Capacities

Fuel Tank:	50 gallons - 1 tank(s)	Holding Tank:	30 gallons - 1 tank(s)
Fresh Water Tank:	104 gallons - 1 tank(s)		

Accommodations

Total Cabins:	2	Crew Cabins:	1
Total Berths:	3	Crew Berths:	1
Total Sleeps:	1	Crew Sleeps:	1
Total Heads:	1	Crew Heads:	1
Captains Cabin:	-		

DESCRIPTIONS

Items of Note

- AC/Heat 2 zone system
- 3 spreader mast with Dutchman sail handling and Tides Marine mast track systems
- Quantum ME2000 Genoa 2012
- Electric starboard halyard winch with convenient foot switch
- (4) AGM Batteries 2015
- 3 Blade MaxProp
- 2018 Bottom Pain, never in water

Accommodations

For its size, the Sabre 402 has one of the best all-around interior layouts of its generation. A fantastic combination of truly usable spaces. Beautiful Sabre construction with full cherry joinery throughout and solid teak and holly cabin sole. Extensive opening ports and overhead hatches bring in lots of light and fresh air. It's really hard to imagine getting any more out of a 40' interior.

- Spacious master cabin - Vberth, vanity sink, sitting area, hanging lockers and drawers
- Generous VIP aft cabin - double berth, sitting area, lots of storage, private access to head
- Large aft head - separate shower, 6'+ head room, VIP private access
- Galley - large galley that is both an excellent sea galley and great for cooking and entertaining. Ample refrigeration with top and front access, plenty of storage, lots of counter space
- Saloon - Comfortable and ample seating on a starboard settee and port L shaped settee, drop leaf table with integrated bottle storage allows for small and large dining groups, great mix of closed and secure open storage
- Nav Station - secure and appropriately sized forward facing station. Easy access to all primary systems controls and navigation equipment.

Other Items

- AC/Heat - two zone
- (4) Hella 12V fans
- (8) opening hatches, screens, 2 with solar powered vents
- (8) Opening Stainless Steel ports, screens, shades
- (2) Chrome Dorade vents
- Blue Upholstery in main area. Red in Vberth
- Vberth includes custom mattress and mattress cover
- Full Cherry joinery throughout
- Teak & Holly sole varnished
- SeaFrost refrigeration, shore power or engine driven separate cold plate system
- Regal 4 burner + Oven SS stove, propane
- Microwave oven
- Misc pots, pans, plates and cups
- Double SS sinks with H/C pressure water, manual pump raw water, manual pump filtered water
- Raritan Elegance electric head w/ Y valve for Lectrasan or traditional holding tank. Plumbed for fresh water.

Electronics

Nav Station, Interior:

- B&G Network multi-read Repeater
- B&G chartplotter
- ICOM IC 504 VHF radio w AIS & mast mounted hailer
- Fuel Gauge
- Sony Stereo/MP3/Bluetooth radio Speakers in cabin & cockpit
- Toshiba flat screen TV w/DVD

Helm Station:

- B&G Network Depth, AWI (2) and Speed over cabin top
- B&G Autopilot and GPS on wheel pod
- Raymarine C80 multidisplay AIS and Radar Chartplotter.
- Mast mounted Raytheon 2kRadar
- RAM MIC at wheel
- Ritchie compass with light

Sails and Rigging

- Masthead sloop rig by Hall Spars, triple spreader, awl gripped finish
- Rod Rigging, split backstay, Inspected May 2014
- Hydraulic backstay adjuster
- Windex masthead fly
- LED anchor light with photo cell
- Hall Quick Vang
- Whisker Pole track on mast
- Halyards aft to Spinlock clutches (6)
- (1) Lewmar #44 CST halyard winch
- (1) Dedicated #44 Lewmar electric main halyard winch with foot switch
- (2) Lewmar #54 CST primary winches
- (2) mast mounted winches
- Harken roller furler
- Harken 6-1 traveler system
- Adjustable Gauhauer Genoa cars
- Spare jib halyard
- Tides Marine Strong sail track for main
- Dutchman main sail handling system
- North mainsail with two single line reef points with Dutchman system and blue sailcover
- Quantum 140% MC polyester RF genoa (2012)
- The main was cleaned and has had a New clew ring, headboard webbing and telltales. The Genoa has been cleaned and New UV covers were installed in 2007

Hull and Deck

Flag Blue gelcoat topsides, Gold cove stripe, White double boot stripe

Teak rub rail with SS cap

Sugar scoop transom - with step through stern pulpit, teak covered transom steps and swim ladder

Shallow draft (4'11") lead bulb/wing keel, thru-bolted with stainless steel bolts

Fresh 2018 bottom paint

Decks, Divinycell closed-cell PVC foam cored

Stainless steel stem head fitting

Double cast aluminum anchor roller

Anchor locker with Simpson Lawrence windlass and raw water wash down system

Teak toe rails with integrated midship chocks

Full-length varnished hand rails on cabin top, with canvas covers

Stainless steel bow and stern pulpits, stanchions with double lifelines and port, starboard and stern gates

(6) 10" mooring cleats

(8) Lewmar polished Ocean Series deck hatches with wood framed screens

(8) Opening stainless steel ports with screens and sliding companionway hatch

(2) Chrome dorade vents

Edson pedestal steering, leather wrapped wheel, Richie compass, instrument pod

Electrical

- 12V / 120V switch panel at Nav station
- Heart 2000 watt charger/Inverter
- Link 20 monitor
- 12V Battery selector
- (4) 31D high output AGM batteries on 2 banks 2015
- 120V power source selector
- 2 x 120V shore circuits w/ 3 shore power cords and 50amp splitter
- Multiple 12V sockets at Nav station
- Multiple 110V outlets, GFI circuit
- Carbon monoxide, smoke detector
- (9) Ceiling lamps, most with LED bulbs
- (6) Chrome Frigast reading lamps w/ LED bulbs
- Courtesy lighting along cabin sole
- Boat wired and prepped for a Fisher Panda genset. Current unit not functional. Easy swap.

Other Equipment

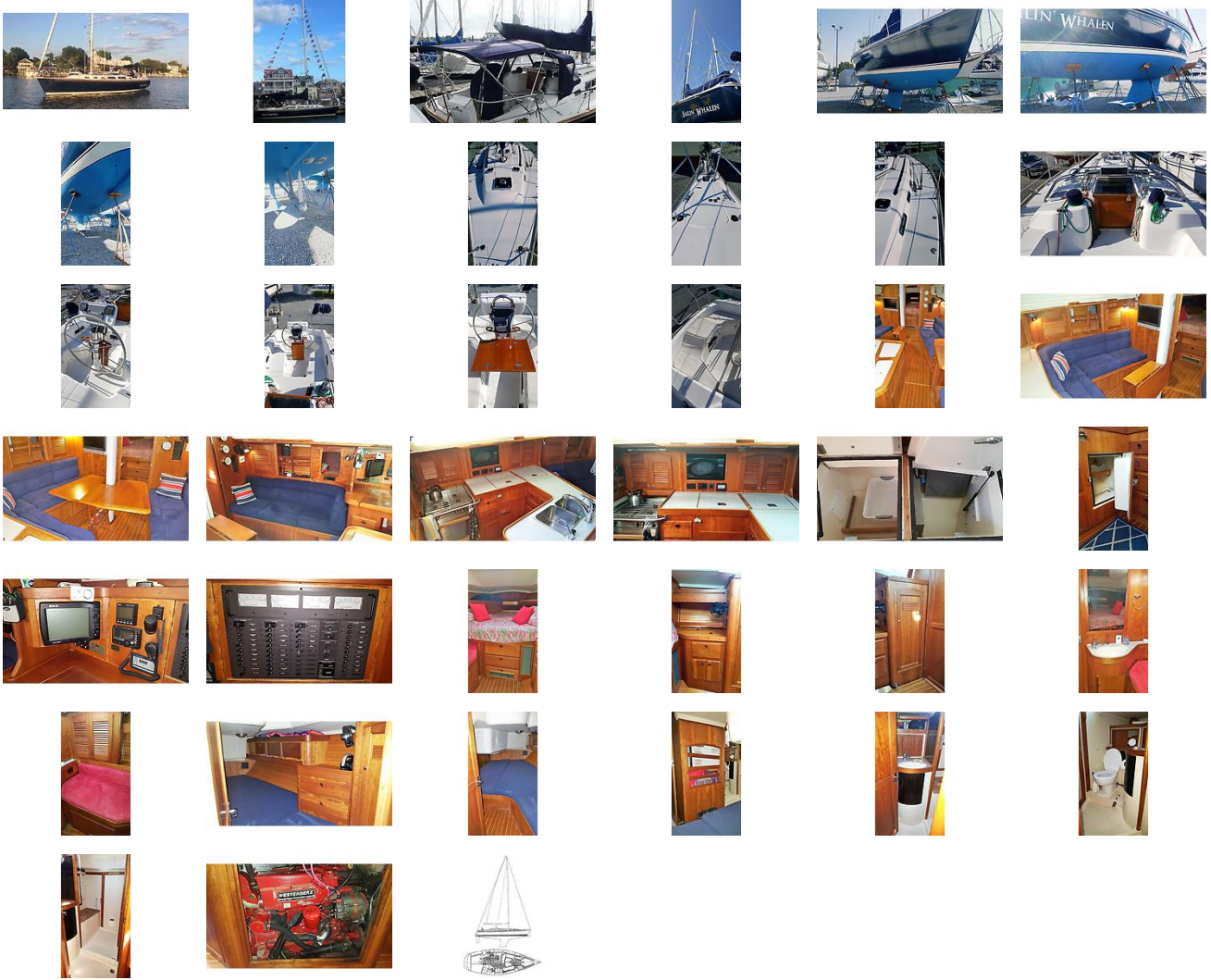
- Bombard hard bottom 8' dinghy
- Yamaha 4hp 4cycle O/B
- Edson O/B s/s mount
- Forespar motor lift
- Dodger, bimini and connector in dark blue
- Fully wraparound dark blue cockpit enclosure
- Cockpit Cushions
- 45 lb Manson anchor, chain & rode
- Fortress anchor, chain & rode
- Anchor washdown system
- Cockpit Shower
- Inclinometer
- Companionway screen boards
- (2) aluminum LPG tanks in vented locker
- Stern mounted propane grill w cover
- Whale manual bilge pump in cockpit
- Radar reflector
- (2) harness tether attach point in cockpit
- Life Preservers
- Lifesling
- Boat Hooks

- Fire Extinguishers
- Dock lines
- (4) oversized fenders
- Oversized Ensign
- All books, manuals

NPYS Disclaimer

The Company offers the details of this vessel in good faith but cannot guarantee or warrant the accuracy of this information nor warrant the condition of the vessel. A buyer should instruct his agents, or his surveyors, to investigate such details as the buyer desires validated. This vessel is offered subject to prior sale, price change, or withdrawal without notice.

GALLERY



LOCATION MAP



North Point

yacht sales

ANNAPOLIS • PORTSMOUTH • CHARLESTON

DAVID MALKIN
 North Point Yacht Sales
 7330 Edgewood Road
 Annapolis, MD, US
 Office: 410-280-2038
 Mobile: 443-790-2786
david@northpointyachtsales.com

